

All Through the Still, Silent Night

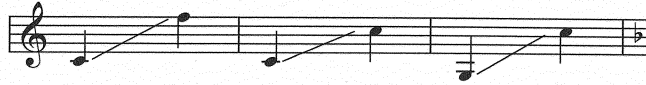
SSA Chorus and Piano

Ruth Elaine Schram

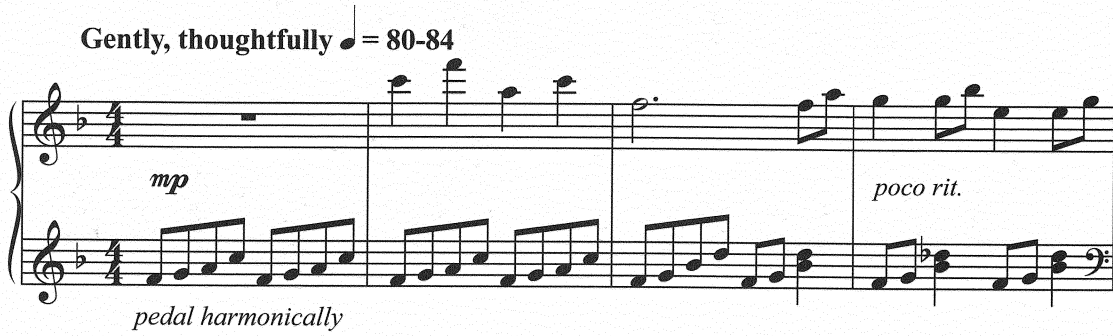
Traditional

Incorporating *All Through the Night* (Traditional Welsh carol);
Silent Night, Holy Night (by Franz Gruber);
Still, Still, Still (Traditional Austrian carol)

Ranges: Soprano I Soprano II Alto



Gently, thoughtfully ♩ = 80-84



5 *a tempo* All Voices *mp*

Sleep, my child, and peace at-tend thee

9

all through the night. Guard - ian an - gels

Duration: approx. 3:00

© 2015 Heritage Music Press, a division of The Lorenz Corporation. All rights reserved. Printed in U.S.A.

Unauthorized reproduction of this publication is a criminal offense subject to prosecution.
THE CCLI LICENSE DOES NOT GRANT PERMISSION TO PHOTOCOPY THIS MUSIC.

God will send thee all through the night.

15 *SI mf*

Soft the drow - sy hours are creep - ing,

SII mf

Soft the drow - sy hours are creep - ing,

A mf

Soft the drow - sy hours are creep - ing,

mf

poco rit.

mp a tempo

hill and vale in slum - ber deep - 'ning; I my lov - ing

poco rit.

mp a tempo

hill and vale in slum - ber deep - 'ning; I my lov - ing

poco rit.

mp a tempo

hill and vale in slum - ber deep - 'ning; I my lov - ing

poco rit.

mp a tempo

20 *p poco rit.*

vig - il keep - ing all through the night.

p poco rit.

vig - il keep - ing all through the night.

p poco rit.

vig - il keep - ing all through the night.

poco rit.

24 *a tempo* *mp*

Si - lent night,

a tempo *mp*

Si - lent night, —

a tempo *mp*

Si - lent night, —

a tempo

28



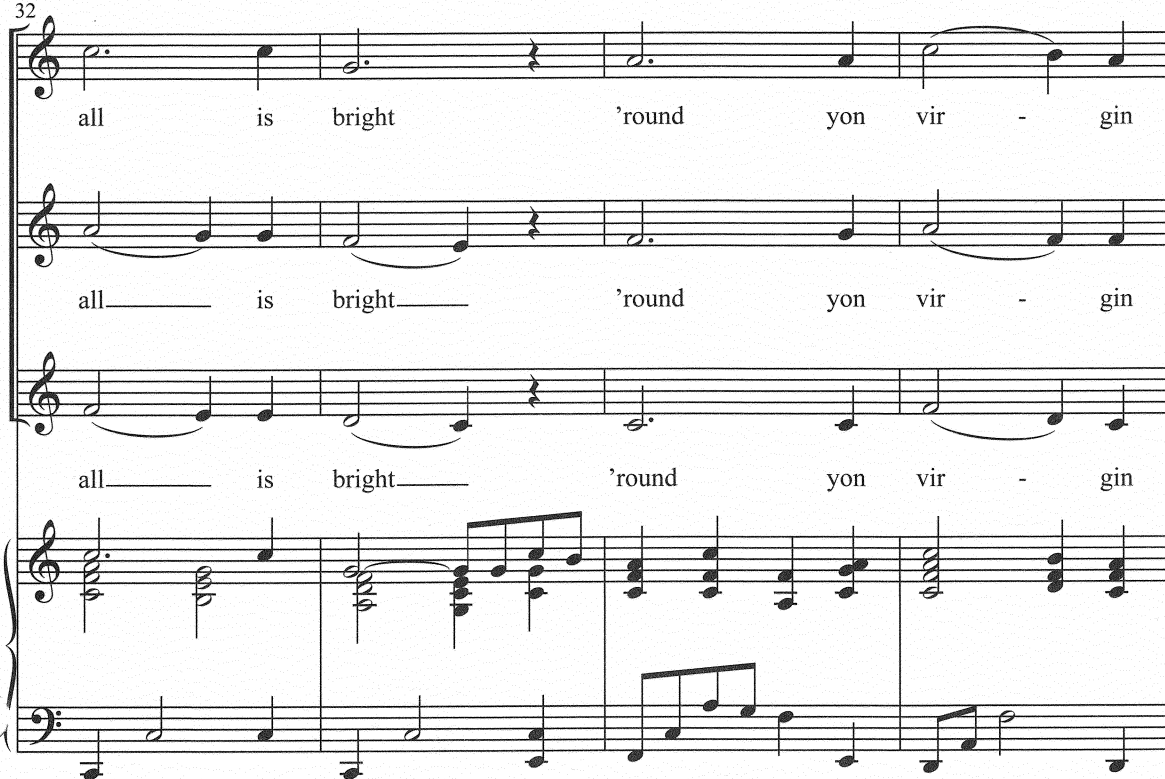
ho - ly night, all is calm,

ho - ly night, all is calm,

ho - ly night, all is calm,

The musical score for measures 28-31 features three vocal staves and a piano accompaniment. The vocal parts are in treble clef, and the piano part is in grand staff. The lyrics are: "ho - ly night, all is calm,". The piano accompaniment consists of a flowing eighth-note melody in the right hand and a steady eighth-note bass line in the left hand.

32



all is bright 'round yon vir - gin

all is bright 'round yon vir - gin

all is bright 'round yon vir - gin

The musical score for measures 32-35 features three vocal staves and a piano accompaniment. The vocal parts are in treble clef, and the piano part is in grand staff. The lyrics are: "all is bright 'round yon vir - gin". The piano accompaniment continues with a similar eighth-note texture, providing harmonic support for the vocal lines.

36

moth - er and child; ho - ly in - fant so

moth - er and child; ho ly in - fant so

moth - er and child; ho - ly in - fant so

The piano accompaniment features a treble and bass clef. The treble clef part has a key signature of one sharp (F#) and a common time signature. The bass clef part has a key signature of one sharp (F#) and a common time signature. The piano part consists of chords and moving lines in both hands.

40

ten - der and mild, sleep in heav - en - ly

ten - der and mild, — sleep — in heav - en - ly

ten - der and mild, — sleep — in heav - en - ly

The piano accompaniment continues with a treble and bass clef. The treble clef part has a key signature of one sharp (F#) and a common time signature. The bass clef part has a key signature of one sharp (F#) and a common time signature. The piano part consists of chords and moving lines in both hands.

44

rit. *a tempo* *rit.*

peace, in peace, sleep— in heav - en - ly

rit. *a tempo* *rit.*

peace, in peace, sleep— in heav - en - ly

rit. *a tempo* *rit.*

peace, in peace, sleep— in heav - en - ly

rit. *a tempo* *rit.*

48

a tempo *rit.* **Freely**

peace. Sleep,— sleep,— sleep,

a tempo *rit.*

peace. Sleep,— sleep,— sleep,

a tempo *rit.*

peace. Sleep,— sleep,— sleep,

Freely

a tempo *rit.*



52 *dim. poco a poco*

sleep, my child, and peace at-tend thee all

dim. poco a poco

sleep, my child, and peace— at-tend thee all

dim. poco a poco

sleep, my child, and peace— at-tend thee all

dim. poco a poco

55 *p rit.* *ppp*

through the night.

p rit. *ppp*

through; Si - lent night.

p rit. *ppp*

through; Si - lent night.

p rit. *ppp*